

# Student Voice

A look inside...

CULC news

Labour aims to take control of city council



Cambridge LibDems: A Decade of Failure



Andy Burnham joins CULC on NHS campaign



## Labour fights for Cambridge Living Wage



David Miliband meets with CULC to discuss Cambridge Living Wage campaign

## Local elections could be crucial to campaign success

**Cambridge Labour students and Labour councillors have joined together to win a Living Wage for staff in Cambridge. Their main targets are the universities and Cambridge City Council.**

The Living Wage campaign is inspired by the belief that all workers deserve to earn not just the minimum wage, but a living wage. This amount is calculated based on

the cost of essential items such as food, fuel and rent. The amount is currently £7.20 in Cambridge. The overall aim of the campaign is that the 31 colleges, Cambridge University, and ARU sign up to become accredited Cambridge Living Wage employers.

Cambridge Labour councillors have pledged to make Cambridge City Council a Living Wage employer.

Victory in the 3rd May 2012 local elections will be crucial to the campaign's success. CULC Chair Richard Johnson stated, 'We believe that all people deserve to earn enough to pay for their basic needs. The people who clean our rooms, serve our meals, maintain our green spaces, and secure our buildings deserve a decent quality of life. The Living Wage achieves this.'

Why should students vote in local elections on 3rd May?

# Labour aims to win control of Cambridge City Council



CULC joins with local members of Cambridge Labour each week to win a better life for residents and students in Cambridge

## Student votes WILL make the difference

After last year's stunning 11% swing from LibDem to Labour, Cambridge Labour is poised to re-take control of Cambridge City Council for the first time since 2000.

With Labour coming fewer than 90 votes from winning a major student seat last year, the student vote will be the crucial factor in the election outcomes.

The question is, why should students vote in local elections?

A Labour victory in Cambridge would be a major blow to the Liberal Democrats nationally. The LibDems only control 7 councils in the UK, and losing Cambridge would send a clear signal to Nick Clegg that students do not support this coalition government.

Cambridge Labour Party has produced a 'Contract with Cambridge' – a clear set of goals that set out Labour's positive vision for a social democratic Cambridge.

If you believe in fairness, equality, and social justice, Labour is the best and only alternative to the Liberal Democrats.

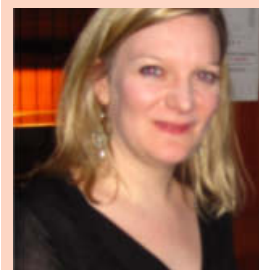
### Labour's 'Contract with Cambridge'

- **FAIRER**  
We pledge to turn Cambridge City Council into a Living Wage employer.
- **SAFER**  
We support CUSU's 'Right to Light' campaign, believing some parts of the city are dangerously poorly lit.
- **CLEANER**  
We will identify areas where pavements and cycle paths are obstructed, dirty, or dangerous.
- **GREENER**  
We will start an Energy Co-Operative and recycle ALL plastic containers - not just bottles, like the LibDems.
- **MORE PROSPEROUS**  
We will create a new 'Jobs and Skills Partnership' in Cambridge, aimed at delivering more jobs for young people.

## YOUR Labour candidates



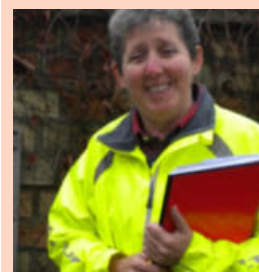
**Market ward: Christ's, Corpus Christi, Downing, Emmanuel, Jesus, Pembroke, Peterhouse, Sidney Sussex**  
Noel Kavanagh, former Cambridge University Press publisher



**Newnham ward: Clare Hall, Darwin, King's, Newnham, Queens', Robinson, Selwyn, St Catharine's, Wolfson**  
Sarah Cain, English Director of Studies



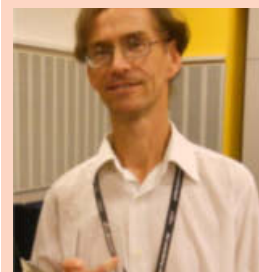
**Castle ward: Clare, Gonville & Caius, Trinity Hall, Trinity, St John's, Magdalene, Lucy Cavendish, St Edmund's, Murray Edwards, Churchill, Fitzwilliam**  
Ashley Walsh, history student



**Petersfield ward: Anglia Ruskin University, Hughes Hall**  
Gail Marchant-Daisley, family lawyer



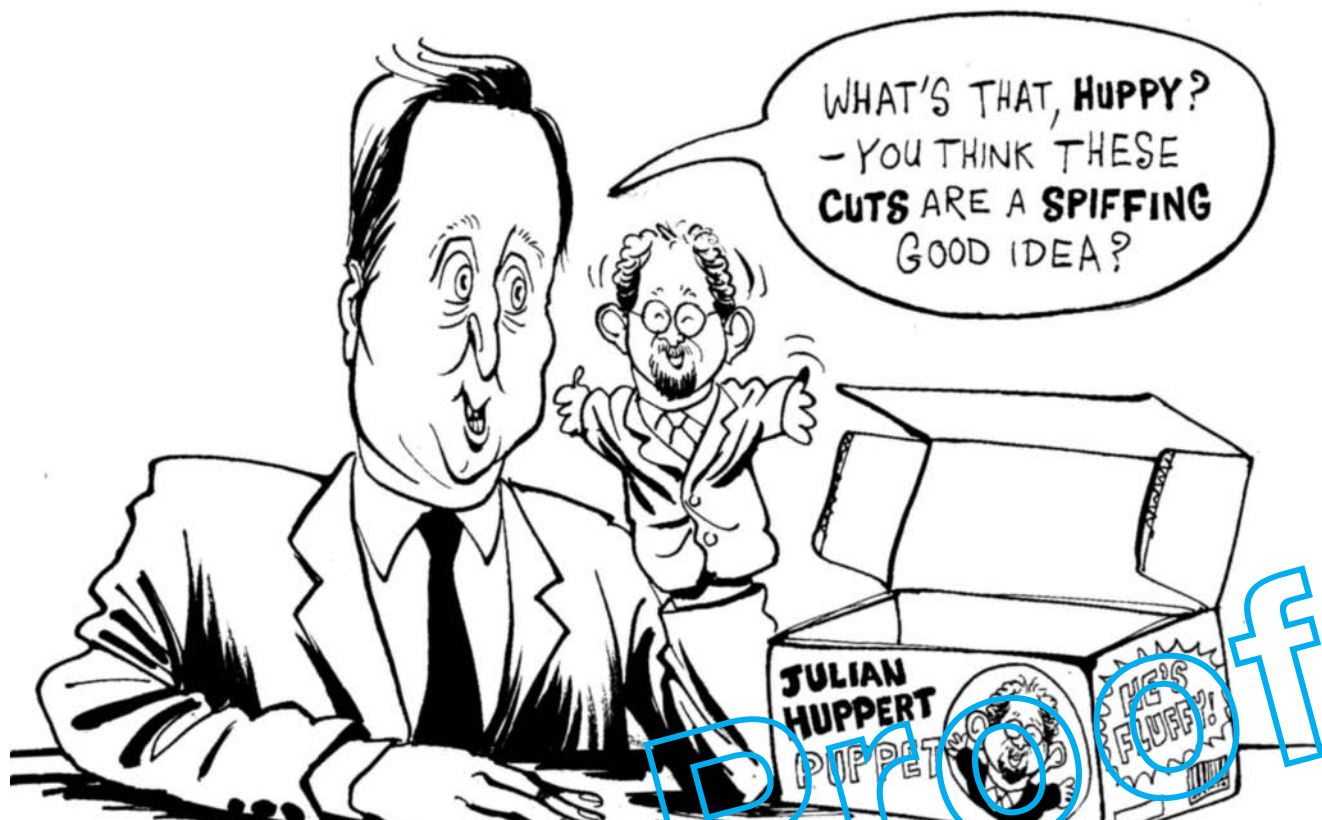
**Queen Edith's ward: Homerton**  
Sue Birtles, welfare rights advisor



**Arbury ward: Magdalene (Cripps Court), Clare (Colony)**  
Mike Todd-Jones, Chemistry Department librarian

All colleges automatically register students to vote. You will get your polling card in late April.

# Liberal Democrats let down Cambridge students



Julian Huppert MP, elected in 2010 on the LibDem promise of standing up for students, voted to slash the higher education teaching budget by 80%.

Cambridge Liberal Democrats have spoken the language of equality, but actions speak louder than words.

Cambridge Liberal Democrats delivered leaflets promising to end tuition fees and protect Labour's investment in higher education. We all know that they failed to stick to these allegedly fundamental promises.

Aware that Cambridge students do not support the Conservative agenda, Cambridge LibDems have attempted to portray themselves as independent voices from the coalition.

The reality is that Cambridge's LibDem MP Julian Huppert has voted with the Conservatives 97.9% of the time (theyworkforyou.co.uk).

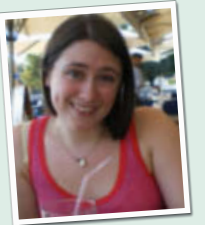
Huppert voted to slash funding for higher education, to increase VAT, to abolish EMA, and voted against the bishops' changes to ameliorate the Conservatives' vindictive welfare bill.

Locally, Cambridge LibDems have implemented 28% cuts to public spending, raised rent on the poorest in the city, and tried to close major disabled access toilets in Cambridge city centre.

## Cambridge students voting Labour

*I'm really excited that Cambridge Labour councillors will make our city council a Living Wage employer. They will set an example that the university will find difficult to ignore.*

**Clare Walker-Gore, Selwyn**



*I voted LibDem in 2010 when they made promises of free education and large-scale spending commitments. I am so disappointed that they sold out their principles for power. Can you imagine the look on Clegg's face if he loses one of his few remaining councils in Britain?*

**Sam Ahmed, Girton**



*I've always believed that politics is about making a difference in the world. A Labour council in Cambridge will be fairer and prioritise the needs of the vulnerable. This election will be where we can make a real difference in people's lives.*

**Martha Morey, Fitzwilliam**



## LibDem Headlines: Fact from Fiction

### Hard truths behind the LibDem headlines

- ✓ FACT: Without LibDem support, the tuition fee increase to £9,000 would not have passed.
- ✓ FACT: Cambridge to London tickets have gone up by 6% this year, above the rate of inflation.
- ✓ FACT: The number of unemployed 16 to 24 year-olds has risen by 105,000 since the Liberal Democrats joined the Tories in government -- the highest since 1992.

### Claims from recent Lib Dem leaflets in Cambridge

- ✗ 'Cambridge Liberal Democrats standing up for students'
- ✗ 'Curbing rail fare rises'
- ✗ 'Tackling Labour's legacy of youth unemployment'

# Andy Burnham returns to Cambridge

## Honorary CULC President campaigns to save NHS

In a packed room of over 150 students, CULC's honorary president Rt. Hon. Andy Burnham MP addressed students on the importance of his Cambridge education.

Andy Burnham spoke at Fitzwilliam College, where he studied English. Commenting on his return, Burnham said, 'I've spoken at many wonderful places in my life, but nothing is stranger than coming back to speak where you had your first Fitz ent night'.

Shadow Secretary of State for Health, Andy Burnham is campaigning to save the NHS from the coalition's radical restructuring.

'The NHS embodies the best of Labour's values, and we must fight to protect it. I'm calling on Andrew Lansley to drop the bill'.



## Labour's message

### Labour's leadership team

Making the case for social justice

*Our vision is for an economy based on sustainable wealth creation - where rewards are more fairly shared and where we take on the vested interests that squeeze people's living standards.*

### Ed Miliband MP, Leader of the Labour Party



*If we are going to compete on a global scale, we're missing a trick if we're not placing universities and the knowledge economy at the heart of our growth strategy*

### Shabana Mahmood MP, Shadow Minister for Universities



# Degrading lap-dancing clubs in Cambridge? LibDems say yes

## Local Lib Dems fail to take a stand

Several councils around Britain have adopted a 'nil policy' for lap dancing clubs, effectively banning them.

Despite efforts of local campaigners, Cambridge LibDem City Council recently reversed its own Licensing Committee's decision to conduct a consultation on a 'nil policy' for lap dancing clubs.

Sarah Cain, English fellow and Labour city council candidate, says: 'Lap dancing clubs are degrading and exploitative and, if elected, I will oppose them'.

### Labour's record on gender equality speaks for itself

- The Equality Act
- Sure Start Centres
- Child Tax Credit
- Paid Maternity Leave
- Flexible Working Hours
- More female MPs than any other party
- All women short-lists



LAP DANCE CLUB

Promoted by Chris Freeman Cambridge Labour Party and Cambridge Universities Labour Club all of Alex Wood Hall, Norfolk Street, Cambridge CB1 2LD . Trinity Mirror Printing Ltd.. Tidal Sidings, Portmanmoor Industrial Estate, Cardiff CF24 5HD Trinity Mirror Printing Ltd. Tidal Sidings, Portmanmoor Industrial Estate, Cardiff CF24 5HD

# Join CULC and help Labour win back Cambridge!

- I will be voting Labour
- I want to join CULC for £1
- I want to join the Labour Party for £1
- I want to help Labour win in Cambridge
- I will not be in Cambridge on election day (3rd May 2012). Please send me a postal vote.

Name	
Phone	Mobile
Email	
Address	
Postcode	

### Ways to get in touch

07502148908

[www.cambridgeuniversitylabour.co.uk](http://www.cambridgeuniversitylabour.co.uk)

[labour@cusu.cam.ac.uk](mailto:labour@cusu.cam.ac.uk)

**Please complete and return this form to:** CULC c/o Alex Wood Hall, Freeport 9653, Alex Wood Hall, Norfolk Street, Cambridge CB1 2LD